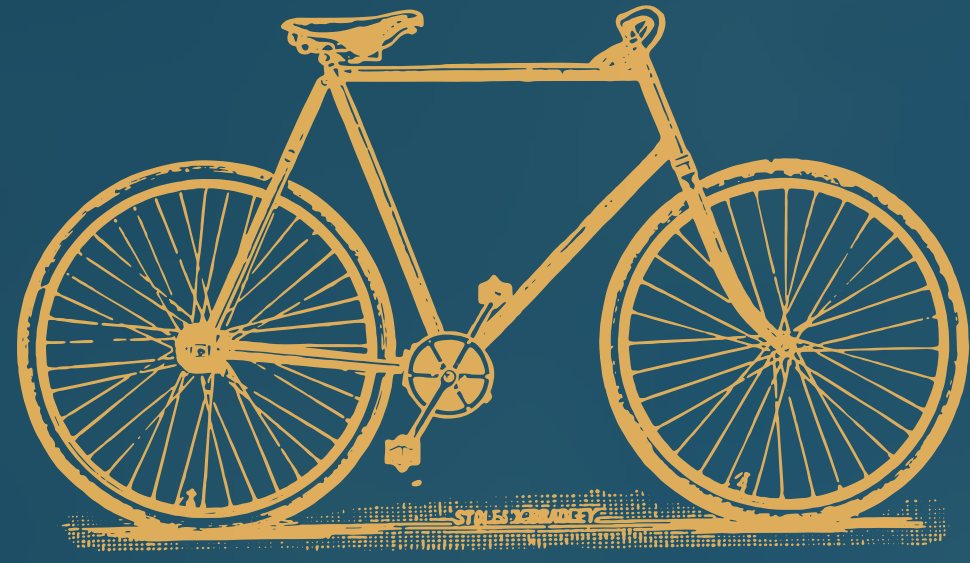


PRESENTED BY
THE GREATER VICTORIA CYCLING COALITION
AND BIKE TO WORK SOCIETY



THE FIRST-EVER
NEIGHBOURHOOD
SCAVENGER
HUNT 

MAY - AUGUST 2020

GORGE/TILLICUM

gvcc.bc.ca/theme-rides/



GREATER VICTORIA
**CYCLING
COALITION**

GREATER VICTORIA
BIKE to WORK
SOCIETY



About this

May - August 2020

NEIGHBOURHOOD SCAVENGER HUNT

Welcome All Scavenger Hunters!

Welcome to the Gorge/Tillicum Scavenger Hunt! This Scavenger Hunt covers both sides of the Gorge, extending to Craigflower Road in the south and up to the Seven Oaks neighbourhood on the north side. Crossing the Gorge, you can use Admirals Road, which has a protected bike lane, or the Selkirk Trestle multi-use bridge along the Galloping Goose. You can also cross at Tillicum Road, though there is no bike lane along this bridge.

The Greater Victoria Cycling Coalition and Bike to Work Society are offering a series of Scavenger Hunts, Discovery Rides, and Ride-the-Distance Rides for neighbourhoods across the Greater Victoria region. These activity series will be happening from May to August 2020. Every two weeks, two new scavenger hunts challenges will be released for two new neighbourhoods. The Gorge/Tillicum Scavenger Hunt will be released on Friday, June 19th. Story entries will be due two weeks later on June 30th at midnight. These neighbourhood challenges are designed for all-ages and aim to bring some competitive fun and exploration into your life!

How to win a prize:

Explore these clues and submit a photo, story, or video to us about your experience or something you discovered on this Scavenger Hunt challenge. **Submissions can be sent to us by filling out the short activity form on the GVCC website under 'themed rides' or via Facebook and Instagram by tagging us at @biketoworkvic or #yyjbike!** With every submission, you will be entered into a draw for a chance to win a gift card for take-out food from a local restaurant or bike shop near you. Prizes for this Gorge/Tillicum will be mailed to draw winners on June 30th 2020.

Why ride right now?

Studies have shown that cycling helps to reduce stress, boost the immune system, and stay physically active.



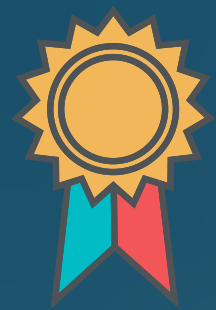
Activities are designed with adult supervision in mind. Before undertaking any outdoor activities, please be sure to follow the latest COVID-19 Provincial Support and Information.





Clues

1. Canada's first Japanese Tea Garden operated at this location for 35 years until it was destroyed in 1942 by local looters following the forced internment of Japanese Canadians during the Second World War.
2. A new multi-use trail across Highway at the McKenzie Interchange. This trail opened in late Spring 2020 and allows cyclists and pedestrians to cross the busy Mackenzie interchange.
3. Cuthbert Holmes Park. See how many of the over 120 different species of birds and river animals you can spot at this park along the Colquitz River. Check out the interpretive signs should you need any assistance in identifying the local wildlife.
4. The Colquitz River has one of the largest watersheds in Greater Victoria, covering an area extending up to Elk/Beaver Lake before draining into Portage Inlet.
5. Located in this branch are the Saanich Archives, which contains thousands of photographs, multiple different exhibits, school resources, and a project studying Saanich's involvement in World War One.
6. Bamfield Park was the site of the Victoria West Men's Brotherhood clubhouse, built in 1920, and renamed the Victoria West Community Association in 1930 to welcome women into the group. The parkland was later acquired after World War Two and named in honour of community leader James Bamfield.



Clues

- 7.** Bits of white shell remnants along the shoreline of the Gorge make up a shell midden from the Kosampson Village. Descendants of the Kosampson people are part of the Esquimalt First Nation. See the next clue for hints as to where this village site was.
- 8.** Craigflower Schoolhouse and Manor, built in 1954 on the former Kosampson village site.
- 9.** “Bridging Perspectives” and art installation by Blake Williams. The art piece uses the Garry Oak to represent positive relationships between the local residents and the local ecology.
- 10.** The site of wealthy industrialist Robert Dunsmuir’s mansion before he moved to the sprawling estate of Hatley Castle. The manor here, Burleith, was completed in 1892 and took up what is now a block of residential houses, from Coventry Avenue to Burlerith Crescent. The house burned down in 1931 after sitting abandoned for several years. One piece of the property that remains is the stonewall along Craigflower.

Find a sign of the old Burleith manor by checking out the old stonewall on Craigflower Road between Coventry Avenue and Burleith Crescent.
- 11.** The site of a 110 foot diving tower on the Gorge, built in 1922. It was one of the highest diving towers in North America and divers landed in only 15 feet of water.
- 12.** Finish the Scavenger Hunt by taking a picture of your favourite spot along either side of the Gorge.

Reminder: These activities are taking place on the unceded territories of the Lekwungen and WSÁNEĆ Nations.

Page 2 of 2

Activities are designed with adult supervision in mind. Before undertaking any outdoor activities, please be sure to follow the latest COVID-19 Provincial Support and Information.