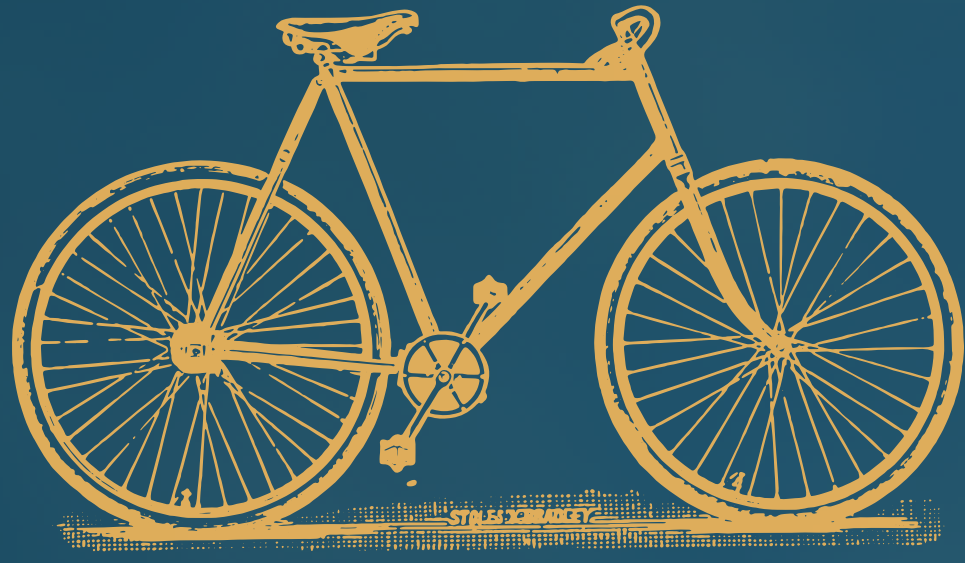


PRESENTED BY
THE GREATER VICTORIA CYCLING COALITION
AND BIKE TO WORK SOCIETY



THE FIRST-EVER
NEIGHBOURHOOD
SCAVENGER
HUNT

MAY - AUGUST 2020

NORTH SAANICH

gvcc.bc.ca/theme-rides/

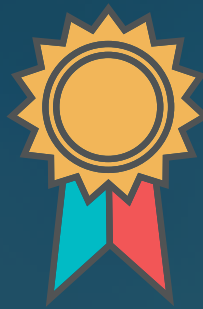


GREATER VICTORIA
CYCLING
COALITION

GREATER VICTORIA
BIKE to WORK
SOCIETY



NEIGHBOURHOOD SCAVENGER HUNT



May - August 2020

Welcome All Scavenger Hunters!

Have you read every book in the house? Watched all the episodes of your favourite TV shows? Looked at your bicycle and wished you could go on an adventure? Well, we've got a fun-filled neighbourhood scavenger hunt just for you!

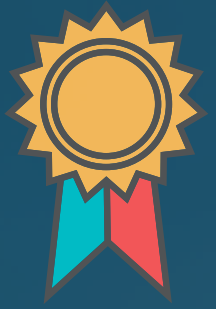
The Bike Victoria Society is offering a series of Scavenger Hunts, Discovery Rides, and Ride-the-Distance Rides for neighbourhoods across Greater Victoria. Every two weeks we will release new activities until the end of August.

How to play the game:

Explore these clues, and submit a photo, story, or video to us about your experience or something you discovered on this Scavenger Hunt challenge. **Submissions can be sent to us by filling out the short activity form on the GVCC website under 'themed rides' or via Facebook and Instagram by tagging us at @biketoworkvic or #yyjbike!** With every submission, you will be entered into a draw for a chance to win a gift card for take-out food from a local restaurant or bike shop near you. Prize winners for this challenge will be drawn on August 20th.



**GREATER VICTORIA
CYCLING
COALITION**



Clues

- 1.** In its early days, the Patricia Bay Airport facility, where the BC Aviation Museum is now, was the third largest station in Canada with approximately 10,000 military personnel passing through Pat Bay. Ride over to this museum. What colour is the airplane on the museum logo?
- 2.** A boulder is located along the bike path on route to the Victoria International Airport. However, this is not just any boulder, it is a glacial erratic that tumbled into this exact spot from Mt. Newton during the Fraser Glaciation period, approximately 15,000 years ago. Students from Parklands Highschool used to learn about this rock in their geo-sciences classes back in the 1970s!
- 3.** In SENĆOŦEN as shared by David Elliot Sr., Patricia Bay has two names, one for spring and another for the rest of the year. The name for spring at this bay's slough is TKÁYEĆ meaning "small closed off area." This place is home to a variety of bivalve species which have been "gardened" by Coast Salish First Nations peoples for thousands of years. Can you find a butter clam in the sands along this sandy beach?
- 4.** This year-round farmers market, bakery, and bistro, lies only across the road from the multi-use path that encircles Victoria International Airport. This farm is complete with a brewery, and employs a team of rabbits, piglets, and miniature goats as its welcoming committee. Visit this farm on the north side of the airport.
- 5.** This point at the northwest tip of the Saanich peninsula is a beachcomber's delight at low tide. Tidal pools full of tiny crabs, starfish, while sea lions, seals, dolphins, and the occasional pod of killer whales can be observed in the ocean. Can you find a starfish or crab at this point named for a famous religious figure?
- 6.** Across the cove from Moses Point is this 20m pier, created almost 100 years ago by resident Bill Blaauw. Deep Cove cemented itself as a recreational area for Greater Victoria when the electric railway Interurban line, opened in 1913, allowed for short escapes out of the city. The pier was built shortly after in response to this new influx. What sights can you see from the pier?

Clues

- 7.** This registered historic place is comprised of eleven log buildings surrounded by paddocks, grassed fields, with a double row of poplar trees lining the entire drive. Established originally in 1870, the farmhouse looks virtually the same as it did a hundred years ago with a red, three-story hay barn, and a gable roof traditional-style farm worker's house.
- 8.** What was once a horseracing track was previously part of the farm referenced in clue 7, and has recently been the topic of major discussion over what should be done with the reclaimed land. This site also once served as a meeting place for WSA NEC First Nations; find the Big Garry Oak In the center.
- 9.** On the shores of Tsehum Harbour, just south of the Sidney-North Saanich Yacht Club, is an undeveloped park containing exceptionally large Doug Fir and Arbutus trees for the area. Nymph Point Park is a reminder of the Tseycum First Nations 10,000 year connection to the area, as the harbor was used as a winter home for the Tseycum who harvested foodstuffs like salmon, seaweed, and shellfish. Find the biggest arbutus tree you can at this small park.
- 10.** This park just off East Saanich Road not only has great views of Haro Strait, but is one of Canada's National Gravity Net Stations which monitors gravity data, digital terrain, and movement of the Earth's crust. Find the small metal plaque marking the gravity net station at the west slope of the site.
- 11.** The stunning views continue at Horth Hill Regional Park. The rain loving cedar trees at the base give way to drought resistant Garry Oak meadows as you approach the 136m summit. Which birds can you spot perched in these trees at the park? Watch for American robins, hummingbirds, as well as swallowtail butterflies.